

# NVAA



# FALL FEMALE CLASSIC SALE



**Saturday, October 28, 2017 • 12 NOON**

HOSTED BY:  
**Woodside Farm South**  
New Market, VA



# Northern Virginia Angus Association

On behalf of the Northern Virginia Angus Board members and the Northern Virginia Angus Association, we would like to invite each of you to our NVAA Fall Female Classic Sale on Saturday, October 28, 2017. And be sure to note our Location: Woodside Farm South – New Market, VA.

This year's consignors have brought some of their best to showcase their respective herds – plus, Legacy at Pine Hill has chosen to bring you a strong group of Fall calvers. The offering is loaded with quality genetics from top to bottom and you are sure to find what works in your herd.

Northern Virginia Angus Association would like to thank Woodside Farms for hosting this year's event in their auxiliary location – Woodside Farm South – New Market, VA – at THE Round Barn. David, Paige and Trey have been very gracious hosts these past few years and we appreciate their hospitality.

I would like to take this opportunity to thank the Northern Virginia Angus Board members, Tim Douglas and Dave Mullins for their dedication and enthusiasm to bring this sale together, and Rebecca Webert of Black Locust Livestock LLC for doing the catalog. I wish to thank all of the consignors for entrusting us to sell their cattle.

If you have any questions about this sale offering, feel free to contact any of the Northern Virginia Angus Board members, the Fall Female Classic consignors, Tim Douglas or Dave Mullins. We look forward to seeing you on October 28th.

Sincerely,

Chuck Alexander  
NVAA President

Dear Angus Enthusiasts,

It is with excitement and enthusiasm that I welcome you to Northern Virginia Angus Association Fall Female Classic Sale. As you review the offering you will see that there is a strong sampling of some of the world's finest genetics being offered, represented by industry leading A.I. sires and historically predictable and highly profitable cow families. This sale offering includes: Fall cow/calf pairs, bred heifers, spring bred cows, elite open heifers, and embryo packages. Please take special note of the large offering of females consigned by Legacy Farms. Steve and his family have dug deep into their herd and this is a unique opportunity, as they are only offering some of these females due to an emphasis on reducing numbers and thus you will have the opportunity to invest in genetics that typically would not be offered to the public.

If you have followed along with this historical event over the years or are a relatively new member of the Angus family, we encourage you to highlight October 28th on your calendar and make plans to join us for an exciting event and take advantage of the opportunity to invest in some outstanding genetics, while enjoying Angus fellowship and the beautiful scenic views of the Shenandoah Valley.

If you should have any questions about the sale offering, please do not hesitate to call, and I'll be happy to assist in any way possible. I speak for the entire list of consignors when I say that we look forward to seeing you at the historical round barn, in New Market, Virginia on October 28th.

Thank you,  
Dave Mullins



# FALL FEMALE CLASSIC SALE

Saturday, October 28, 2017 • 12 NOON • Woodside South

**Auctioneer:**

Dave Mullins, Danville, IN.....(317)503-2798

**Sale Manager:**

Dave Mullins, Danville, IN.....(317)503-2798

**Ringmen and Publication Representatives:**

Chris Jeffcoat, Angus Journal.....(717)476-1496  
Chris Wojciechowski.....(540)292-0841

**Special Assignment:**

Scott Buchanan.....(703)431-9616

**Sale Consultants:**

Virginia Angus Association.....(540)337-3001  
Chris Wojciechowski.....(540)292-0841  
Tim Douglas.....(540)539-1811  
*Buyers unable to attend may send their bids to the Sales Consultants, Regional Manager, Ringmen, Sale Manager or Auctioneer.*

**Sale Day Phones:**

Chuck Alexander.....(540)533-5669

**Sale Location:**

Woodside South  
13789 North Valley Pike, New Market, VA  
David, Paige and Trey Gum, Owners  
Trey's Cell: (540)974-8659

Woodside Farms South is located on US Route 11, 4 miles south of New Market (Exit 264 off I-81) or 4 miles north of Exit 257 on I-81.

**Health:**

Health papers will be available for immediate interstate shipping.

**Inspection of Sale Offering:**

Cattle will be available for viewing after 2:00 p.m. on Friday, October 27, 2017 at the sale location.

**Terms and Conditions:**

Cattle sell under the standard terms and conditions as recommended by the American Angus Association. Settlement is required immediately following the sale, prior to load out, unless arrangements have made with the Northern Virginia Angus Association.

**Trucking:**

Livestock haulers believed to be reliable will be available.

**Accommodations:**

Quality Inn, New Market.....540-740-3141  
Days Inn, New Market.....540-740-4100  
Holiday Inn Express, Woodstock.....540-459-5000  
Hampton Inn, Woodstock.....540-459-7111  
Comfort Inn, Woodstock.....800-992-2694

**Insurance:**

Livestock mortality insurance will be available at the clerks desk.

**Ear Tags:**

Eartags on the cattle will correspond to their lot numbers in the sale book.

**Announcements:**

Announcements made from the auction block during the sale take precedence over printed material in this sale book and on the update sheet.

An update sheet will be available on sale day to update breeding information or general information on cattle selling.

*The EPDs represented in this sale catalog were current at the time requested for printing. Twice annually, EPDs are re-calculated by the American Angus Association, which means the figures represented in this catalog may change for these animals in the future.*

**Sale Sponsored by:**



**Northern Virginia Angus Association**

Chuck Alexander, President  
Jim Wylie, Vice-President  
Kevin Murray, Secretary  
Kenny Payne, Treasurer

**Directors:** Matt Venskoske, Jim Kelly, Dennis Pearson, Bethany Johnson Seal, Jason Arehart, Kenny Payne, Mike Owens, Tommy Clarke, Matt St. Clair, Rob Ashby, Jack Shutte, John Pennington

**Sale Book Designed By:**

Black Locust Livestock LLC  
Rebecca Webert 540.333.1019

rebecca@blacklocustlivestock.com



# Open Heifers

1

## Woodside Rita 7U52 of 1746

Calved: 3/9/2017 Cow: 18766408 Tattoo: 7U52  
 B/R Future Direction 4268 # CA Future Direction 5321  
**WR Journey-1X74** B/R Ruby 9114  
 16924332 2 Bar 5050 New Design 7831 #+ GAR New Design 5050  
 # Connealy Consensus 7229 # 2 Bar 036 Lady 0107  
**EXAR Lucy 1746** Connealy Consensus  
 16882863 Basin Lucy 3829 # Blue Lilly of Conanga 16  
 # CA Future Direction 5321  
 Basin Lucy 178E

CED	BW	WW	YW	Milk
I+10 0.05	I+.1 0.05	I+47 0.05	I+83 0.05	I+29 0.05
MARB	I+.70	RE	I+.78	FAT
\$W	+56.17	\$F	+45.19	\$G
			+44.73	\$B
				+132.58

### Consigned by: Woodside Farm

- This impressive daughter of WR Journey - 1X74 comes from a donor that was the cornerstone LUCY in the Woodside donor program before selling to Ankony Angus for \$17,000
- The dam, Lucy 1746 is a direct daughter of the \$390,000, Basin Lucy 3829 and shows a WR 4@101 and a YR 3 @101.
- The performance and pedigree run deep on this future donor female.

3

## Locust Hill Primrose E40

Calved: 3/4/2017 Cow: 18864681 Tattoo: E40  
 EXAR Classen 1422B Dameron First Class  
**Boyd Crossroads 3031** EXAR Princess 2006  
 17545400 Boyd Abigale 0001 # SAV Pioneer 7301  
 #+ BC Lookout 7024 SAV Abigale 8076  
**Limestone Primrose U797** OCC Legend 616L  
 16346928 Twin Valley Primrose 1278 #+ Gibbet Hill Mignonne E37  
 #+ Woodhill Resolution  
 N Bar Primrose 2424

CED	BW	WW	YW	Milk
I+3 0.05	I+3.1 0.05	I+63 0.05	I+110 0.05	I+25 0.05
MARB	I+.18	RE	I+.59	FAT
\$W	+62.66	\$F	+72.86	\$G
			+19.60	\$B
				+119.73

### Consigned by: Locust Hill Farm

- This mating of Boyd Crossroads 3031 with one of Locust Hill's top Angus donors Primrose U797, has produced some outstanding heifer calves with good feet, eye appeal and plenty of depth and shape to their rib.
- This heifer is a full sister to Primrose D076 who was Reserve Senior Calf Champion at the West Virginia State Fair, and will be replacing her dam in our donor pen.
- Sells halter broke to stand.



Whitestone Jestress 3094 - Dam of Lot 4

2

## Georgina Heifer Calf

Calved: 3/5/2017 Cow: Pending Tattoo:  
 Plainview Lutton E102 # Exar Lutton 1831  
**S&R Roundtable J328** Plainview Pride C123  
 17573679 PVF Proven Queen 786 # BR Midland  
 #+ PVF Proven Queen 419  
 Champion Hill Fullback 380 #+ Rito 9FB3 of 5H11 Fullback  
**Buchanan's Georgina L151** Champion Hill Stone Shadoc  
 16431119 CQS Georgina 4005 # Leachman Saughatchee 3000C  
 LLA Georgina 05

CED	BW	WW	YW	Milk
Sire	+4	+3.8	+52	+88
Dam	+4	+2.8	+39	+60
	MARB	RE	FAT	\$W
Sire	+0.65	+0.54	+0.020	+41.72
Dam	-0.09	+0.20	+0.011	+33.12
				+36.08

### Consigned by: Scott Herndon

- The dam of this heifer has produced several regional and state champions in the showring including the Grand Champion Steer at 2014 National Junior Angus Show and Reserve Grand Champion Steer at the 2017 National Junior Angus Show.



Locust Hill Primrose D076 - Full sister to Lot 3

4

## Beaver Dam Jestress 13

Calved: 2/23/2017 Cow: Pending Tattoo: 13  
 SAV Registry 2831 Rito 707 of Ideal 3407 7075  
**SAV Seedstock 4838** SAV Madame Pride 0075  
 17923480 SAV Blackcap May 4136 # SAV 8180 Traveler 004  
 #+ SAV May 2397  
 WK Hammer 0895 # Pine Ridge Hammer S322  
**Whitestone Jestress 3094** Bohi Countess 885  
 17617466 B&B Jestress 9044 # Connealy Thunder  
 B&B Jestress 4096

CED	BW	WW	YW	Milk
Sire	+4	+2.3	+61	+109
Dam	+5	+1.8	+39	+72
	MARB	RE	FAT	\$W
Sire	+0.01	+0.76	-0.024	+48.83
Dam	+0.33	+0.28	+0.001	+29.00
				+81.61

### Consigned by: Beaver Dam Farm

- This Seedstock daughter is out of a WK Hammer 0895 sired female that traces back to the Genex/CRI sire Connealy Thunder. Her dam is backed by generations of Koupals breeding.

# Open Heifers

5

## Beaver Dam Everelda 12

Calved: 2/13/2017 Cow: Pending Tattoo: 12

# AAR Ten X 7008 SA # Mytty In Focus  
 SAV Ten Speed 3022 # AAR Lady Kelton 5551  
 17633563 # SAV Madame Pride 1134 #+ SAV Bismarck 5682  
 Whitestone RTA Bandolier # SAV Madame Pride 9100  
 Whitestone Everelda C221 # Connealy Danny Boy  
 17559797 Double R Bar Everelda X115 # Cherry Knoll Hailey  
 # Connealy Reflection  
 R/M Everelda Entense 8A69

	CED	BW	WW	YW	Milk
Sire	+5	+1.6	+68	+126	+22
Dam	+9	-0.8	+36	+64	+19
	MARB	RE	FAT	\$W	\$B
Sire	+0.71	+0.91	-0.015	+58.36	+169.90
Dam	I+.49	I+.25	I+.012	+31.18	+77.14

Consigned by: Beaver Dam Farm

• An SAV Ten Speed 3022 daughter from the Everelda Entense cow family, the dam of this heifer is out of the Atlantic Nationals and Virginia Breeders Show Grand Champion bull Whitestone RTA Bandolier.



Whitestone Everelda C221 - Dam of Lot 5



VAR Generation 2100 - Sire of Lots 6 & 7

6

## Audley Jaunty E019

Calved: 2/12/2017 Cow: 18875233 Tattoo: E019

# Connealy Consensus 7229 # Connealy Consensus  
 Blue Lilly of Conanga 16  
**VAR Generation 2100**  
 17171587 Sandpoint Blackbird 8809 # Connealy Onward  
 Riverbend Blackbird 4301  
 Limestone Great Divide U254 # BC Marathon 7022  
**AF Great Divide 140**  
 17282745 AF 239 5050 816 #+ Stevenson Waterback 462J  
 #+ GAR New Design 5050  
 AF Prime Time 239

	CED	BW	WW	YW	Milk		
I+2	0.05	I+1.8	0.38	I+60	0.36		
I+111	0.05	I+22	0.19				
	MARB	I+.34	RE	I+.94	FAT	I-.005	
\$W	+58.02	\$F	+80.73	\$G	+32.50	\$B	+142.55

Consigned by: Audley Farm

• E019 is an outstanding daughter of VAR Generation coming from the heart of the Audley Farm spring replacements. This heifer is bred for performance and has lots of potential. She posts a birth weight ratio of 94. Her dam posts ratios of WW 3@105 and YW 1 @ 111. This heifer will sell halter broke.

7

## Audley Rita E017

Calved: 2/11/2017 Cow: 18875235 Tattoo: E017

# Connealy Consensus 7229 # Connealy Consensus  
 Blue Lilly of Conanga 16  
**VAR Generation 2100**  
 17171587 Sandpoint Blackbird 8809 # Connealy Onward  
 Riverbend Blackbird 4301  
 #+ Rito 112 of 2536 Rito 616 # Rito 616 of 4B20 6807  
**Llangollen 112 P002 R621**  
 15420678 Llangollen BSWKR 6R37 P002 # GAR Precision 2536  
 # BCC Bushwacker 41-93  
 Rita 6R37 of 9H16 Rito 9M9

	CED	BW	WW	YW	Milk		
I+3	0.05	I+2.5	0.43	I+66	0.41		
I+109	0.05	I+21	0.24				
	MARB	I+.36	RE	I+.67	FAT	I-.001	
\$W	+62.67	\$F	+75.00	\$G	+30.19	\$B	+137.55

Consigned by: Audley Farm

• E017 is an ET heifer of a former NVAA fall female sale feature Llangollen 112 P002 R621 and sired by the Vinatge Angus herdsire VAR Generation. This heifer has an outstanding phenotype and loads of performance with a weaning ratio of 110. This heifer will sell halter broke.

8

## BRM Abigale 6310

Calved: 11/6/2016 Cow: 18595841 Tattoo: 6310

Silveiras Conversion 8064 #+ BT Crossover 758N  
**Tanner Conversion 209**  
 17348739 BoBo Lucy 0092 EXG Saras Dream S609 R3  
 Silveiras Out West 7026  
 Three Trees Lucy T0123  
 #+ BC Lookout 7024 OCC Legend 616L  
**Top Line Abigale 1167**  
 16977304 SAV Abigale 7001 # Gibbet Hill Mignonne E37  
 # SAV Net Worth 4200  
 # SAV Abigale 8213

	CED	BW	WW	YW	Milk		
-2	0.32	+3.6	0.47	+54	0.41		
+91	0.35	+23	0.27				
	MARB	+0.30	RE	+0.59	FAT	-0.001	
\$W	+41.86	\$F	+39.88	\$G	+27.76	\$B	+106.58

Consigned by: Broad Run Meadows, LLC - Chad Williams

• Sired by a son of of Silveiras Conversation 8064 from the Tanner program, and out of a Lookout daughter from the well known Abigale cow family, this heifer offers plenty of maternal power and a balanced set of EPDs to match.

# Open Heifers



S Chisum 6175 - Lots 10 and 12 are sired by a son of this well known Angus sire



## OGA Up Front Gal D18

Calved: 10/10/2016 Cow: 18797452 Tattoo: OGD18  
 #+ GDAR Game Day 449 #+ Boyd New Day 8005  
**OGA Game Day B03** # GDAR Miss Wix 474  
 17777636 OGA Blackcap Z02 # Connealy Right Answer 746  
 Claylick Run Blackcap X045  
 # Kesslers Frontman R001 # Connealy Front Page 0228  
**R&A Up Front Gal 272** # Kesslers Bell 0024  
 17227077 R&A Tonya 271 # RCC Preference  
 R&A Tonya ND27

CED	BW	WW	YW	Milk
I+9 0.05	I+0 0.05	I+51 0.05	I+90 0.05	I+29 0.05
MARB	I+.41	RE	I+.47	FAT
\$W +53.01	\$F +44.31	\$G +31.00	\$B	+90.80

Consigned by: Old Gate Angus

- OGA Up Front Gal D18 is a heifer calf sired by OGA Game Day B03
- OGA Game Day B03 Reg: AAA 17777636 carries a +12 CED, -1.6 BW, and a +68.32 \$W
- Ready for fall breeding



## Whitestone Jilt 6278

Calved: 9/28/2016 Cow: 18560952 Tattoo: 6278  
 # S Chisum 6175 S Alliance 3313  
**MB Chisum 4009** # S Gloria 464  
 17891073 MM Blackcap 9060 Boyd Predetermined 6113  
 # MM Blackcap 5061  
 BUF/KLR Blackhawk W969 #+ SAV Providence 6922  
**Buford Jilt 716A** BC Mignonne's Lola 4151  
 17831682 J Bar 7 Audrey's Moon 5497 RAB-EGL Blue Moon 4407M  
 J Bar 7 Audrey Lovana 355

CED	BW	WW	YW	Milk
-1 0.28	+6.4 0.44	+64 0.38	+102 0.33	+22 0.24
MARB	+0.20	RE	+0.66	FAT
\$W +45.96	\$F +59.95	\$G +23.36	\$B	+128.57

Consigned by: Broad Run Meadows, LLC - Chad Williams

- Here is a daughter of MB Chisum 4009, a McKean Brothers bred son of S Chisum 6175 out of whose dam records individual ratios of WW 108 and YW 104 in addition to RE @111.
- Sells open and ready for fall breeding.



## Audley Queen D264

Calved: 9/28/2016 Cow: 18856545 Tattoo: D264  
 # Connealy Consensus 7229 # Connealy Consensus  
**Connealy Black Granite** Blue Lilly of Conanga 16  
 17028963 # Eura Elga of Conanga 9109 #+ SAV Bismarck 5682  
 Eura Cal of Conanga 56B  
 # ALC Big Eye D09N # CA Future Direction 5321  
**AF S191 Big Eye 839** ALC Hazel L12L  
 16311975 GAR Exceptional S191 GAR Evas Exceptional  
 GAR New Design 1689

CED	BW	WW	YW	Milk
+10 0.25	+0.8 0.37	+61 0.32	+105 0.24	+24 0.21
MARB	I+.54	RE	I+.59	FAT
\$W +58.93	\$F +73.10	\$G +36.62	\$B	+125.98

Consigned by: Audley Farm

- A heifer with exceptional growth showing birth and weaning ratios at 97 and 119 respectively. Sired by Connealy Black Granite and out of a Big Eye dam.



## Whitestone Enamel 6277

Calved: 9/26/2016 Cow: 18560951 Tattoo: 6277  
 # S Chisum 6175 S Alliance 3313  
**MB Chisum 4009** # S Gloria 464  
 17891073 MM Blackcap 9060 Boyd Predetermined 6113  
 # MM Blackcap 5061  
 SCC First-N-Goal GAF 114 Dameron First Class  
**Whitestone Enamel C246** SCC Royal Blackbird 502  
 17845850 Triara Enamel 894U # Connealy Power One  
 SandPoint Enamel 6123

CED	BW	WW	YW	Milk
+2 0.3	+2.7 0.47	+47 0.4	+78 0.35	+27 0.27
MARB	+0.74	RE	+0.32	FAT
\$W +48.03	\$F +26.06	\$G +37.87	\$B	+118.06

Consigned by: Broad Run Meadows, LLC - Chad Williams

- Another MB Chisum 4009 daughter, this one stemming from the well know Triara Enamel 894U cow that was so successful for Whitestone in the show ring. This heifer is packed with maternal power.
- Sells open and ready to breed for fall.



Triara Enamel 894U - Lot 12 stems from this power Whitestone Farm donor

# Open Heifers

## 13 MA 6X7 of GAR Complete 3371 [DDF]

Calved: 8/23/2016 Cow: 18538170 Tattoo: 660

# AAR Ten X 7008 SA # Mytty In Focus  
**GAR 100X** # AAR Lady Kelton 5551  
 17774305 GAR 5050 New Design A91 #+ GAR New Design 5050  
 GAR Objective A706  
 # Summitcrest Complete 1P55 # CF Right Design 1802  
**GAR Complete 3371** Summitcrest Elba 1M17  
 17057047 GAR Predestined 1907 # GAR Predestined  
 GAR 1I2 Rito 2205

CED	BW	WW	YW	Milk
+13 0.34	-0.1 0.49	+58 0.43	+110 0.39	+36 0.28
MARB	RE	FAT	\$W	\$B
+0.99	+0.79	-0.037	+65.23	+152.94
\$F	\$G	\$B	\$W	\$B
+71.59	+55.23	+152.94		

Consigned by: Miller Farm

- MA 6X7 comes from the heart of the Miller program and stems from a cornerstone donor. The donor dam of this powerful heifer now records Marbling of 14@105 and Ribeye of 14@100, with over 30 progeny DNA profiled.
- MA 6X7 is the combination of calving-ease, carcass and power in an eye pleasing package. This female had individual measurements for ultrasound of 6.86 for IMF and 10.7 for REA, while also recording an ADJ YWT of 910. With over 17 economically important EPD traits in the top 25% of the breed among non-parent females this female has the potential to be a donor.
- Sells open. Mating possibilities here are endless.



Connealy Black Granite - Sire of Lots 11 and 15

## 14 Audley Rita D130

Calved: 8/21/2016 Cow: 18861019 Tattoo: D130

GAR Ingenuity #+ GAR New Design 5050  
**VAR Index 3282** GAR Objective 1067  
 17513381 Sandpoint Blackbird 8809 # Connealy Onward  
 Riverbend Blackbird 4301  
 WL JVW Huntland T529 Fintry of Graham 52170  
**Audley Miss Huntland A150** Llangollen 205 P045  
 17967760 AF 545 5050 814 #+ GAR New Design 5050  
 AF Right Time 338 545

CED	BW	WW	YW	Milk
+5 0.22	+2.2 0.36	+54 0.31	+98 0.23	+25 0.11
MARB	RE	FAT	\$W	\$B
I+.94	I+.93	I-.022	+45.68	+138.76
\$F	\$G	\$B	\$W	\$B
+56.63	+55.57	+138.76		

Consigned by: Audley Farm

- A daughter of the popular up and coming young sire VAR Index out of a direct daughter of the popular sire bred in the Huntland Farms program T529. This heifer is super moderated with added thickness.

## 16 Audley Rita D108

Calved: 8/17/2016 Cow: 18860997 Tattoo: D108

# AAR Ten X 7008 SA # Mytty In Focus  
**Deer Valley All In** # AAR Lady Kelton 5551  
 17307074 Deer Valley Rita 0274 # Sitz Upward 307R  
 GAR Objective 2345  
 # BC Marathon 7022 OCC Kirby 633K  
**AF 8i2 Marathon 127** Gibbet Hill Mignonne E37  
 17286398 Rita 8I2 of 6K2 Rito 616 # Rito 616 of 4B20 6807  
 Rita 6K2 3N2 Rito 3X25

CED	BW	WW	YW	Milk
+12 0.25	+0.1 0.35	+56 0.31	+97 0.23	+20 0.2
MARB	RE	FAT	\$W	\$B
I+.42	I+.54	I-.011	+48.52	+116.46
\$F	\$G	\$B	\$W	\$B
+53.41	+33.79	+116.46		

Consigned by: Audley Farm

- Sired by the popular Select Sire member Deer Valley All In and tracing back to a daughter bred in Huntland Farms Program. She posts and individual BW ratio of 91.

## 15 Audley Raven D111 [DDP]

Calved: 8/18/2016 Cow: 18856544 Tattoo: D111

# Connealy Consensus 7229 # Connealy Consensus  
**Connealy Black Granite** Blue Lilly of Conanga 16  
 17028963 # Eura Elga of Conanga 9109 #+ SAV Bismarck 5682  
 Eura Cal of Conanga 56B  
 GAR Objective S505 # SS Objective T510 0T26  
**IH Objective S505-012** GAR 1407 New Design 1425  
 16745409 IH Prime Cut 120-3022 LLF Prime Cut 120  
 LLF IH Raven ND 907

CED	BW	WW	YW	Milk
+10 0.23	+1.1 0.36	+54 0.31	+91 0.21	+22 0.20
MARB	RE	FAT	\$W	\$B
I+.62	I+.48	I+.016	+51.53	+121.85
\$F	\$G	\$B	\$W	\$B
+50.93	+38.07	+121.85		

Consigned by: Audley Farm

- A heifer with an exceptional phenotype. Sire by Connealy Black Granite and tracing back to a dam by Objective. BW @97 WW @99

## 17 OGA Blackcap D12

Calved: 8/9/2016 Cow: 18797441 Tattoo: OGD12

#+ Connealy Sullivan 83A Connealy Tobin  
**Mckellar Now Look** Breesha of Conanga 1251  
 16905775 JMc Pearl's Answer 8446 6465 # SAV Final Answer 0035  
 # JMc Pearl Pride 6465 5289  
 # Benfield Substance 8506 #+ HA Image Maker 0415  
**OGA Blackcap A03** Benfield Edella 1105  
 17491658 Claylick Run Blackcap X045 # Connealy Reflection  
 Circle A Blackcap 3523

CED	BW	WW	YW	Milk
I+9 0.05	I+.8 0.05	I+62 0.05	I+109 0.05	I+23 0.05
MARB	RE	FAT	\$W	\$B
I+.69	I+.39	I+.029	+62.49	+117.12
\$F	\$G	\$B	\$W	\$B
+58.11	+36.29	+117.12		

Consigned by: Old Gate Angus

- OGA Blackcap D12 is a heifer calf sired by Mckellar Now Look
- Daughter of OGA Blackcap A03 selling as Lot 42
- Ready for fall breeding

# Bred Heifers

18

## Fasr Blackbird 6010

Calved: 3/31/2016 Cow: 18628441 Tattoo: 6010

Connealy Final Solution # Connealy Answer 71  
 Este of Conanga 364  
**JDH Final Solution 3312** BT Powerline 392K  
 17588203 JDH BT Heiress 0457  
 JDH Heiress 0285  
 Mystic Hill Ringer 0387  
**Mystic Hill Blackbird 141** BC Belle Ringer 854E 4053  
 17518435 DSF Blackbird 874 H437 # Irvington 170 Fix It 3463  
 NEALA Traveler 404  
 Hyland Blackcap 0437

CED	BW	WW	YW	Milk
I+6 0.05	I+2.0 0.05	I+38 0.05	I+73 0.05	I+23 0.05
MARB	N/A	RE	N/A	FAT
\$W	+29.74	\$F	+23.34	\$G
			N/A	\$B
				N/A

Consigned by: The Farm at South River

•Sired by a Connealy Final Solution son from the JDH Cattle Company Program in PA, this heifer is out of a Mystic Hill bred cow. She stacks maternal power on both sides of her pedigree and should make a great cow.

•Sells AI bred to Connealy Comrade 1385 on 6/25/17 and pasture exposed to Fasr Generation 6007 (18628444) from 6/30/17 to 8/26/17



Locust Hill EricaEileen D011 - Lot 20

19

## Fasr Blackbird 6009

Calved: 3/25/2016 Cow: 18628437 Tattoo: 6009

# Mytty In Focus # SAF Focus of ER  
 Mytty Countess 906  
**AAR Ten X 7008 SA** SAV Adaptor 2213  
 #15719841 # AAR Lady Kelton 5551 HSAF Lady Kelton 504B  
 Hyline Right Time 338  
 EXAR Right Time 5021 # GAR 6148 Emulation 1119  
**MGR Blackbird 0123** # Bon View New Design 1407  
 16658227 Riverbend Blackbird S128 # Davis Yr Blackbird 558H

CED	BW	WW	YW	Milk
I+6 0.05	I+1.6 0.05	I+60 0.05	I+112 0.05	I+25 0.05
MARB	I+.76	RE	I+.48	FAT
\$W	+58.59	\$F	+78.57	\$G
			+42.23	\$B
				+147.06

Consigned by: The Farm at South River

•This Ten X daughter stems from the the well known Blackbird cow family and offers an impressive set of EPDs including her spread from BW to YW EPDs.

•Sells AI bred to Connealy Comrade 1385 on 6/25/17 and pasture exposed to Fasr Generation 6007 (18628444) from 6/30/17 to 8/26/17

20

## Locust Hill EricaEileen D011

Calved: 1/13/2016 Cow: 18563336 Tattoo: D011

OCC Legend 616L #+ OCC Emblazon 854E  
 OCC Blackbird 632J  
**BC Lookout 7024** # Papa Equator 2928  
 #+14791623 Gibbet Hill Mignonne E37 Gibbet Hill Mignonne TR 29  
 # SAV Final Answer 0035 # Sitz Traveler 8180  
**Whitestone Erica Eileen Y002** SAV Emulous 8145  
 16379070 Whitestone Erica Eileen W272 #+ Whitestone Xception  
 Whitestone Erica Eileen 609T

CED	BW	WW	YW	Milk
I+11 0.05	I+.2 0.05	I+47 0.05	I+80 0.05	I+20 0.05
MARB	I+.25	RE	I+.34	FAT
\$W	+49.67	\$F	+34.21	\$G
			+22.70	\$B
				+69.95

Consigned by: Locust Hill Farm

•This Lookout daughter is out of a cow we purchased from Whitestone as a calf. She is extremely moderate in her make and easy keeping. If you are looking for a low input female who should produce consistent calves, take a look.

•Sells bred to Connealy Black Granite on May 18, 2017, confirmed bred for a February 24, 2018 calf.

21

## ML- Yasmeen

Calved: 10/20/2015 Cow: 18260119 Tattoo: ML 163

# CRA Bextor 872 5205 608 # BAR Ext Traveler 205  
 Cra Lady Jayne 608 498 S Easy  
**GAR Prophet** 16295688 GAR Objective 1885 # SS Objective T510 OT26  
 GAR 1407 New Design 2232  
 SQ Patriot 103R # Basin Up The Limit  
**SSA Patriot's Matron Z01** Rita 3540 of 021 Rito 111  
 17152725 LLF 501 Objective 870 # SS Objective T510 OT26  
 LLF 108 Design 1407 501

CED	BW	WW	YW	Milk
I+10 0.05	I+1.4 0.05	I+60 0.05	I+103 0.05	I+27 0.05
MARB	I+1.14	RE	I+.52	FAT
\$W	64.50	\$F	+47.19	\$G
			+52.76	\$B
				+118.55

Consigned by: Miky-Leto Farm

•This Prophet daughter is out of the Straightstone Angus cow that sells as Lot 45 and traces back to the Locust Level Farm program in Vernon Hill, VA. With her combination of low birth and high growth numbers and strong milk and carcass EPDs, she offers a genetic package that should work for many different programs.

•Sells pasture exposed to ML - Mick (18297010). Confirmed bred for a late spring calf. More specific calving information available sale day.

22

## LPH Lady 573

Calved: 11/2/2015 Cow: 18376900 Tattoo: 573

Sitz Top Game 561X #+ GDAR Game Day 449  
**JMB Traction 292** # Sitz Pride 88T  
 17262374 JMB Emulota 013 #+ SAV 004 Predominant 4438  
 # BAR S Emulota 5426  
 #+ SAV Bismarck 5682 #+ GAR Grid Maker  
**Pine Hill Lady 978** SAV Abigale 0451  
 16608008 PH Lady 112-667 #+ Boyd New Day 8005  
 Pine Hill Lady 112

CED	BW	WW	YW	Milk
+11 0.24	-0.8 0.33	+55 0.29	+95 0.23	+27 0.17
MARB	+0.15	RE	+0.80	FAT
\$W	+59.20	\$F	+53.80	\$G
			+23.34	\$B
				+98.35

Consigned by: Legacy at Pine Hill Farm

•Bred to Fortress 2-22-2017 and pasture exposed to LPH Final Answer 537 3- 15-2017 until 4-1-2017. Due 12-2-2017. You should note that this is another outstanding Traction daughter having superior birth genetics. Do not overlook this cow she will make a great cow herd replacement.



# Fall Cow Calf Pairs and Fall Calving Cows



JMB Traction 292 - Sire of Lot 24 and 30

23

## LPH Claire 577

Calved: 11/8/2015 Cow: 18490291 Tattoo: 577  
 # Bon View New Design 208 # B/R New Design 036  
**TC Total 410** # Bon View Erica 443  
 #14844711 TC Erica Eileen 2047 # Twin Valley Precision E161  
 #+ SAV Bismarck 5682 #+ GAR Grid Maker  
**Legacy Claire 122** SAV Abigale 0451  
 17150842 Legacy Claire 854 # SAV Net Worth 4200  
 MC Claire 2003

CED	BW	WW	YW	Milk
+3 0.25	+3 0.33	+61 0.29	+105 0.23	+26 0.22
MARB	+0.61	RE	+0.66	FAT
\$W	+52.35	\$F	+71.61	\$G
		\$B	+41.14	\$B
				+150.04

Consigned by: Legacy at Pine Hill Farm

• Bred to Poss Element 1-4-2017 and pasture exposed to LPH Final Answer 537 2-1-2017 until 4-1-2017. I used Element to breed my heifers after seeing him at Hawkeye West in Montana. The technicians working there considered him a bull to use on heifers if you were interested in having low birth weights and growth genetics. In addition I really like the muscle expression in his calves! This cow is another from our Claire cow line. Her dam is one of our best Bismarck daughters. She is another heifer that weaned over 600 pounds and had over a 900 lb. yearling weight. Her herd percent IMF ratio was 108 and notice she is in the top 10% of the breed for \$ Beef!

25

## Legacy Belle 547

Calved: 9/19/2015 Cow: 18369314 Tattoo: 547  
 Rito 707 of Ideal 3407 7075 # RR Rito 707  
**SAV Resource 1441** Ideal 3407 of 1418 076  
 17016597 SAV Blackcap May 4136 # SAV 8180 Traveler 004  
 #+ SAV May 2397  
 # SAV Brilliance 8077 #+ SAV Bismarck 5682  
**Legacy Belle 279** SAV Blackcap May 5270  
 17514095 GAR Expectation 704S #+ GAR Expectation 4915  
 GAR New Design G71

CED	BW	WW	YW	Milk
+12 0.24	-1.3 0.33	+45 0.29	+83 0.27	+22 0.2
MARB	+0.37	RE	+0.59	FAT
\$W	+44.76	\$F	+36.02	\$G
		\$B	+30.30	\$B
				+90.76

Consigned by: Legacy at Pine Hill Farm

• Bred to SAV Final Answer 11-30-2016 pasture exposed to LPH Final Answer 537 (bull is jointly owned by Eldon Tanner and John Braxton) 1-10-2016 until 4-1-2017. This heifer is a combination of the best genetics from the Schaff Angus herd and the Gardiner's of Kansas. Wow notice the low birth weight numbers on this cow!

27

## LPH Georgina 542

Calved: 9/16/2015 Cow: 18378547 Tattoo: 542  
 Connealy Tobin # Bon View New Design 208  
**Connealy Confidence 0100** Delia of Conanga 667  
 16761479 Becka Gala of Conanga 8281 # Connealy Thunder  
 SAV Angus Valley 1867 # Becka Lee of Conanga 37  
**Champion Hill Georgina 8531** # SAV Iron Mountain 8066  
 17689987 Champion Hill Georgina 7811 #+ SAV May 2397  
 SAV Free Spirit 8164  
 Champion Hill Georgina 6240

CED	BW	WW	YW	Milk
+11 0.27	-0.5 0.33	+48 0.29	+88 0.27	+23 0.20
MARB	+0.22	RE	+0.55	FAT
\$W	+45.41	\$F	+42.81	\$G
		\$B	+19.35	\$B
				+96.00

Consigned by: Legacy at Pine Hill Farm

• Bred 12-19-2016 to McConnell Altitude and pasture exposed to LPH Final Answer 1-10-2017 to 4-1-2017. Note she is a Champion Hill Georgina by Select Sires leading AI sire Connealy Confidence. Low birth genetics in this cow.

24

## LPH Pride 556

Calved: 10/3/2015 Cow: 18376891 Tattoo: 556  
 Sitz Top Game 561X #+ GDAR Game Day 449  
**JMB Traction 292** # Sitz Pride 88T  
 17262374 JMB Emulota 013 #+ SAV 004 Predominant 4438  
 # BAR S Emulota 5426  
 # Hoover Dam # SydGen CC&7  
**Pine Hill Pride 259** # Erica of Ellston C124  
 17514088 Pine Hill Pride 076 #+ SAV Mandan 5664  
 Ph Pride 607

CED	BW	WW	YW	Milk
-2 0.25	+3.1 0.33	+65 0.29	+120 0.23	+30 0.17
MARB	+0.19	RE	+1.01	FAT
\$W	+61.16	\$F	+89.64	\$G
		\$B	+24.76	\$B
				+150.36

Consigned by: Legacy at Pine Hill Farm

• Bred to McConnell Altitude 12-21-2016 Pasture exposed to LPH Final Answer 537 1-10-2017 until 4-1-2017. This cow dam is sired by the true cow maker Hoover Dam and sired by Select Sire's greatest outcross option in the Angus breed JMB Traction. Another LPH cow with superior growth genetics showing top 10% weaning and top 5% yearling traits. Her adjusted weaning weight was 662 pounds and her adjusted yearling weight was 985 pounds. For the carcass crowd she is 2% for ribeye traits and in the top 10% for \$ beef. Her actual scan data showed she had a 13.5 ribeye. This cows actual data verifies her superior EPD genetics.

26

## Legacy Claire 546

Calved: 9/18/2015 Cow: 18367689 Tattoo: 546  
 # S A V Iron Mountain 8066 # TC Gridiron 258  
**S A V Angus Valley 1867** S A V Madame Pride 3249  
 +17016630 #+ S A V May 2397 #+ S A F 598 Bando 5175  
 S A V May 7238  
 #+ Werner War Party 2417 # Connealy Onward  
**Legacy Claire 218** BAAR USA Lady Jaye 489  
 17512612 Legacy Claire 043 #+ S A V Bismarck 5682  
 Legacy Claire 735

CED	BW	WW	YW	Milk
+5 0.26	+1.6 0.35	+64 0.31	+116 0.30	+27 0.21
MARB	+0.58	RE	+0.32	FAT
\$W	+60.34	\$F	+74.69	\$G
		\$B	+30.24	\$B
				+132.66

Consigned by: Legacy at Pine Hill Farm

• Bred to SAV Brilliance 11-30-2016 due 9-10-2017. This cow is in the top 10% for weaning and yearling EPDs. She also excels in \$ weaning and feedlot. Claire descends from a Spotlight Champion cow we purchased from Tom McCall.

# Fall Cow Calf Pairs and Fall Calving Cows

28

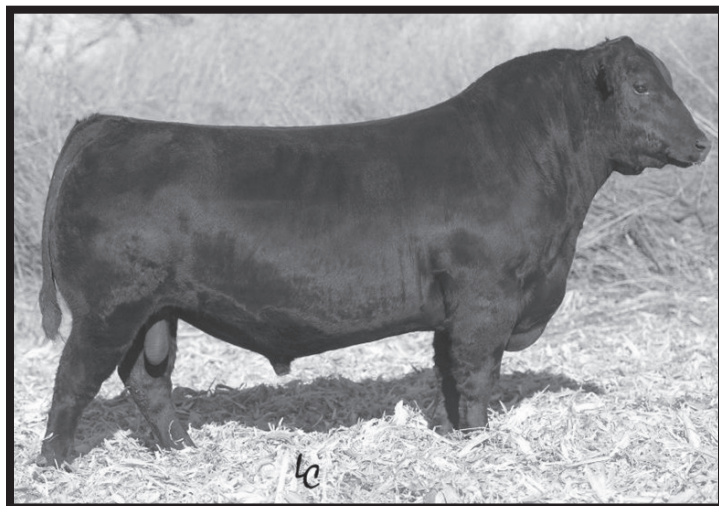
## LPH Miss Wix 543

Calved: 9/16/2015 Cow: 18380124 Tattoo: 543  
 # Sitz Upward 307R # Connealy Onward  
**EXAR Upshot 0562B** Sitz Henrietta Pride 81M  
 16541214 #+ EXAR Barbara T020 # Isu Imaging Q 9111  
 LCC Mc Henry Barbar MG382  
 #+ GAR Expectation 4915 # N Bar Emulation EXT  
**Pine Hill Miss Wix 940** GAR Traveler 2421  
 16607988 PH Miss Wix 051-425 # Bon View New Design 878  
 Shady Brook Miss Wix 051E

CED	BW	WW	YW	Milk
+8 0.25	+1.8 0.36	+52 0.32	+94 0.30	+29 0.22
MARB	+0.76	RE	+0.42	FAT
\$W	+51.19	\$F	+48.35	\$G
			+37.65	\$B
				+127.10

Consigned by: Legacy at Pine Hill Farm

• Bred to Poss Element 12-23-2017 a leading Genex calving ease sire. Pasture exposed to LPH Final Answer 1-10-2017 until 4-1-2017. This cow descends from the McCumber Miss Wix family. A very productive line of cows. It was difficult decision to sell this one.



EF Commando 1366 - sire of Lot 31A

29

## LPH Primrose 533

Calved: 9/13/2015 Cow: 18489421 Tattoo: 533  
 # SAV Final Answer 0035 # Sitz Traveler 8180  
**SAV Pioneer 7301** SAV Emulous 8145  
 #15688392 SAV Blackbird 5297 #+ Boyd New Day 8005  
 SAV Blackbird 1082  
 # KCF Bennett Performer # Hyline Right Time 338  
**Creswell Primrose U629** KCF Miss 589 L182  
 16070290 Thomas Primrose 3427 # Twin Valley Precision E161  
 Thomas Primrose 4327

CED	BW	WW	YW	Milk
I+2 0.05	+3.9 0.32	+56 0.29	+99 0.23	+27 0.23
MARB	+0.12	RE	+0.68	FAT
\$W	+46.73	\$F	+60.13	\$G
			+16.63	\$B
				+112.84

Consigned by: Legacy at Pine Hill Farm

• Bred 11-30-2016 to Connealy Counselor and pasture exposed to LPH Final Answer 537 1-10-2017 to 4-1-2017. An ET cow from our Primrose line by the cow maker SAV Pioneer.

30

## Legacy Everelda 531

Calved: 9/12/2015 Cow: 18368559 Tattoo: 531  
 Sitz Top Game 561X #+ GDAR Game Day 449  
**JMB Traction 292** # Sitz Pride 88T  
 17262374 JMB Emulota 013 #+ SAV 004 Predominant 4438  
 # BAR S Emulota 5426  
 #+ GAR Expectation 4915 # N Bar Emulation EXT  
**Legacy Everelda 145** GAR Traveler 2421  
 17150861 Three Trees Everelda 1272 # Basin Max 602C  
 Three Trees Entense 567G

CED	BW	WW	YW	Milk
+4 0.24	+2.1 0.36	+53 0.32	+101 0.29	+31 0.18
MARB	+0.33	RE	+0.77	FAT
\$W	+50.97	\$F	+59.97	\$G
			+31.10	\$B
				+110.63

Consigned by: Legacy at Pine Hill Farm

• Bred to KCF Bennett Fortress 12-27-2016. Due 10-5-2017. An own daughter of Select Sires and Trowbridge Farm herd sire JMB Traction. Another added value cow from our Everelda cow family. This heifer has that maternal look missing in some Angus cow families.

31

## Brookmeade Great Norma 595

Calved: 8/30/2015 Cow: 18517012 Tattoo: 595  
 # SydGen CC&7 #+ SAF Connection  
**Hoover Dam** SydGen Forever Lady 4087  
 #16124994 # Erica of Ellston C124 # TC Gridiron 258  
 Erica of Ellston V65  
 # Cole Creek Cedar Ridge 1V # Cole Creek Black Cedar 46P  
**Brookmeade Great Norma 394** # Cole Creek Clovanada 49S  
 17820550 # Brookmeade Great Norma 1122 # Brookmeade Traveler 929  
 # Brookmeade Great Norma 872

CED	BW	WW	YW	Milk
+0 0.28	+4.0 0.36	+54 0.31	+97 0.21	+27 0.21
MARB	N/A	RE	N/A	FAT
\$W	+41.88	\$F	+54.81	\$G
			N/A	\$B
				N/A

Consigned by: Lazy Lane Farm

• This first calf Hoover Dam daughter stems from the Brookmeade Great Norma cow family that has been incredibly productive for Lazy Lane Farm. She offers balanced growth numbers and strong maternal genetics and should make a productive cow for her new owner.

• She sells with a heifer calf at side, Lot 31A, born 8/30/17 and sired by EF Commando 1366 (17082311).

32

## AudleyMiss BlackGranite C096

Calved: 8/25/2015 Cow: 18520021 Tattoo: C096  
 # Connealy Consensus 7229 # Connealy Consensus  
**Connealy Black Granite** Blue Lilly of Conanga 16  
 17028963 # Eura Elga of Conanga 9109 #+ SAV Bismarck 5682  
 Eura Cal of Conanga 56B  
 # TC Total 410 # Bon View New Design 208  
**IH Total-8032** TC Erica Eileen 2047  
 16319266 IH Focus 6321-4003 GAR Focus 6321  
 IH New Design 323-730-1010

CED	BW	WW	YW	Milk
+9 0.25	+1.4 0.37	+50 0.33	+87 0.31	+21 0.21
MARB	+0.47	RE	+0.79	FAT
\$W	+43.65	\$F	+47.86	\$G
			+40.04	\$B
				+115.76

Consigned by: Audley Farm

• A moderated framed daughter of the popular sire Connealy Black Granite. She stems from a dam produced in the Ivy Hill Program. Will see with heifer calf, Lot 32A, born 8/11/17, sired by the Select Sire Roster member GAR Prophecy.

# Fall Cow Calf Pairs and Fall Calving Cows

33

## OGA Blackcap C04 [OSF]

Calved: 3/25/2015 Cow: 18196350 Tattoo: OGC04

#+ Boyd New Day 8005 # AAR New Trend

**GDAR Game Day 449** SVF Forever Lady 57D

#+14691231 # GDAR Miss Wix 474 # Tehama Band 207

GDAR Miss Wix 749

# Connealy Reflection # Bon View New Design 878

**Claylick Run Blackcap X045** Happy Grill of Conanga 6260

16972851 Circle A Blackcap 3523 # Summitcrest High Prime 0H29

A Plus Blackcap 9075

CED	BW	WW	YW	Milk
+7 0.34	+0.6 0.47	+53 0.42	+88 0.38	+27 0.32
<b>MARB</b>	<b>+0.45</b>	<b>RE</b>	<b>+0.48</b>	<b>FAT</b>
<b>\$W</b>	<b>+63.20</b>	<b>\$F</b>	<b>+39.28</b>	<b>\$G</b>
			<b>+30.09</b>	<b>\$B</b>
				<b>+108.14</b>

### Consigned by: Old Gate Angus

- OGA Blackcap C04 is sired by GDAR Game Day 449
- Sells with a bull calf at side, OGA Envision E16 (Reg. 18878759), born 8/21/17 and sired by 44 Envision. 44 Envision is the Ten X son that has it all – calving ease, growth, carcass and “cow sense” phenotype



Turning Pt Off The Grid 5227 - sire of Lot 34A

34

## Turning Pt Rita 5557 [OHP]

Calved: 3/13/2015 Cow: 18338723 Tattoo: 5557

#+ BC Lookout 7024 OCC Legend 616L

**BC Eagle Eye 110-7** Gibbet Hill Mignonne E37

#15751696 # BC Pure Pride Erica D 110 #+ OCC Doctor 940D

CAF Pure Pride Ext 99

#+ Rito 2 878 of 2536 BVND 878 # Bon View New Design 878

**Turning Pt Rita 5957** GAR Precision 2536

15204933 Turning PT 044 Miss Glory # GDAR Traveler 044

Turning PT 2RT7 Miss Glory

CED	BW	WW	YW	Milk
I+2 0.05	I+2.5 0.05	I+46 0.05	I+77 0.05	I+20 0.05
<b>MARB</b>	<b>I+.24</b>	<b>RE</b>	<b>I+.47</b>	<b>FAT</b>
<b>\$W</b>	<b>+41.08</b>	<b>\$F</b>	<b>+42.85</b>	<b>\$G</b>
			<b>+28.99</b>	<b>\$B</b>
				<b>+88.74</b>

### Consigned by: Turning Point Angus

- This Eagle Eye daughter is a first calf heifer from Mark's 2016 show string with plenty of eye appeal. She stems from a multigeneration Turning Point cow family and offers plenty of maternal power in her pedigree.
- Sells with a show heifer prospect at side, Lot 34A, born 9/6/17 and sired by Turning Pt Off The Grid 5227 (Reg. 18367508) who was Senior Champion Bull at the 2017 Virginia Angus Breeders Show.



Mark Alexander, Turning Point Angus, was Premier Breeder and Premier Exhibitor at the 2017 Virginia Angus Breeder Show

35

## Legacy Everelda 514

Calved: 2/2/2015 Cow: 18175231 Tattoo: 514

# Connealy Onward # Connealy Lead On

**Werner War Party 2417** Altune of Conanga 6104

#+16004857 BAAR USA Lady Jaye 489 # BAR Ext Traveler 205

Cra Lady Jaye 608 498 S Easy

#+ SAV Bismarck 5682 #+ GAR Grid Maker

**Legacy Everelda 113** SAV Abigale 0451

16930943 #+ Legacy Everelda 550 # SAV 8180 Traveler 004

Three Trees Everelda 2481

CED	BW	WW	YW	Milk
+12 0.25	-0.1 0.35	+51 0.31	+93 0.29	+34 0.21
<b>MARB</b>	<b>I+.24</b>	<b>RE</b>	<b>I+.63</b>	<b>FAT</b>
<b>\$W</b>	<b>+57.61</b>	<b>\$F</b>	<b>+42.58</b>	<b>\$G</b>
			<b>+25.67</b>	<b>\$B</b>
				<b>+104.50</b>

### Consigned by: Legacy at Pine Hill Farm

- Bred 11/30/2016 to the now deceased SAV Pursuit a son of Pioneer. Due 9-10-2017 She is sired by my all-time favorite Angus herd sires War Party and out of another one of our very productive Evereldas for added value. Note her CED, BW and milk EPDs. A value-added cow!! Pasture exposed to LPH Final Answer 537.

36

## LPH Belle 466

Calved: 11/16/2014 Cow: 18205879 Tattoo: 466

# SAV Final Answer 0035 # Sitz Traveler 8180

**SAV Pioneer 7301** SAV Emulous 8145

#15688392 SAV Blackbird 5297 #+ Boyd New Day 8005

SAV Blackbird 1082

# SAV 8180 Traveler 004 # Sitz Traveler 8180

**LPH Belle 953** Boyd Forever Lady 8003

16604195 #+ GAR Expectation 1970 #+ GAR Expectation 4915

GAR Precision 4396

CED	BW	WW	YW	Milk
I+3 0.05	I+4.3 0.39	I+58 0.37	I+97 0.05	I+24 0.32
<b>MARB</b>	<b>I+.28</b>	<b>RE</b>	<b>I+.43</b>	<b>FAT</b>
<b>\$W</b>	<b>+47.22</b>	<b>\$F</b>	<b>+49.79</b>	<b>\$G</b>
			<b>+19.76</b>	<b>\$B</b>
				<b>+109.65</b>

### Consigned by: Legacy at Pine Hill Farm

- A rare opportunity to purchase a daughter by Schaff Angus top maternal sire Pioneer. Bred 1-22-2017 to Connealy Comrade due 8-31-2017. She descends from our Belle line that originates with the GAR Scotch Cap line of cows. A beautiful cow with a perfect udder. Glenn Covington will love this cow!

# Fall Cow Calf Pairs and Fall Calving Cows

37

## Legacy Everelda 453

Calved: 10/16/2014 Cow: 18133917 Tattoo: 453

# Connealy Reflection # Bon View New Design 878  
 Happy Grill of Conanga 6260  
 #15543702 Pearl Pammy of Conanga 194 # Vermilion Dateline 7078  
 Pearl Jam of Conanga 6114

#+ GAR Expectation 4915 # N Bar Emulation EXT  
 GAR Traveler 2421

### Legacy Everelda 145

17150861 Three Trees Everelda 1272 # Basin Max 602C  
 Three Trees Entense 567G

CED	BW	WW	YW	Milk
+9 0.26	+0.9 0.37	+51 0.32	+90 0.24	+29 0.25
MARB	+0.52	RE	+0.47	FAT
\$W	+62.19	\$F	+43.57	\$G
		\$B	+36.19	\$B
				+95.25

Consigned by: Legacy at Pine Hill Farm

• Bred 1/7/2017 to the breed leading performance sire Bennett Fortress due 10/15/2017. 453 is another cow from our top performing Everelda family. She has weaned one bull calf with a 106 ratio.

38

## Legacy Primrose 508

Calved: 9/9/2014 Cow: 18155856 Tattoo: 508

Connealy Tobin # Bon View New Design 208  
 VDAR Blackbird 2031  
 #16761479 Becka Gala of Conanga 8281 # Connealy Thunder  
 Becka Lee of Conanga 37

# K C F Bennett Performer # Hyline Right Time 338  
 # 4M Countess Jackie C46  
**Creswell Primrose U629** # Twin Valley Precision E161  
 16070290 Thomas Primrose 3427 # Thomas Primrose 4327

CED	BW	WW	YW	Milk
+12 0.23	-0.1 0.28	+46 0.26	+82 0.23	+22 0.26
MARB	I+.18	RE	I+.60	FAT
\$W	+53.78	\$F	+41.99	\$G
		\$B	+15.94	\$B
				+109.57

Consigned by: Legacy at Pine Hill Farm

• Bred 1/22/2017 to Connealy Comrade due 11-3-2017. Pasture exposed to LPH Final Answer 537 1-10-2017 to 4-1-2017. A cherished ET daughter of our Primrose cow that descends from the Thomas Ranch herd.

39

## Monomoy Blackbird B10 [OSF]

Calved: 9/9/2014 Cow: 17984176 Tattoo: B10

# AAR Ten X 7008 SA # Mytty In Focus  
 #17307074 Deer Valley All In # AAR Lady Kelton 5551  
 # Sitz Upward 307R  
 GAR Objective 2345

#+ B/R New Frontier 095 # B/R New Design 036  
 # White Fence Pride H1  
**Monomoy Blackbird 1234** #+ Leachman Right Time  
 15891517 Whitestone Blackbird R017 DCF 0092 Exacto 737F

CED	BW	WW	YW	Milk
+16 0.36	-1.6 0.53	+51 0.47	+91 0.43	+29 0.33
MARB	+0.99	RE	+0.31	FAT
\$W	+61.44	\$F	+36.22	\$G
		\$B	+48.38	\$B
				+98.64

Consigned by: Monomoy

• A three year old daughter of Deer Valley All In built for longevity and calving ease. From one of Monomoy's top cow families with potential to be a top producer.

• EPDs enhanced and parentage confirmed by 50K DNA test.

• Sells due to calve on October 4, 2017 to Select Sires MAF Tanker from Mogck Angus Farm in South Dakota. Tanker is an up and coming bull with elite DNA.

40

## Monomoy Blackbird B6 [OSF]

Calved: 9/7/2014 Cow: 17983973 Tattoo: B6

# Mytty In Focus # SAF Focus of ER  
 #15719841 # AAR Ten X 7008 SA Mytty Countess 906  
 SAV Adaptor 2213  
 HSAF Lady Kelton 504B

# Bon View New Design 878 # B/R New Design 036  
 # Bon View Gammer 85  
**Monomoy Blackbird 817** #+ Leachman Right Time  
 16347795 Whitestone Blackbird R017 DCF 0092 Exacto 737F

CED	BW	WW	YW	Milk
+3 0.38	+2.1 0.55	+59 0.49	+112 0.45	+24 0.36
MARB	+0.65	RE	+0.50	FAT
\$W	+51.50	\$F	+84.61	\$G
		\$B	+34.94	\$B
				+167.15

Consigned by: Monomoy

• This is a three year old Ten X daughter with wide top and volume.

• Her grandam produced 8 herd bulls that passed the rigorous requirements of the Virginia B.C.I.A. Bull test, including the top indexing bull in 2011.

• EPDs enhanced and parentage confirmed by 50K DNA test.

• She is due to calve on September 26, 2017 to Basin Payweight 1682, one of the most in demand sires in the breed at \$100 per straw.

41

## SLL Forever Lady B19

Calved: 8/23/2014 Cow: 18691897 Tattoo: B19

# Connealy Onward # Connealy Lead On  
 #14963730 Sitz Upward 307R Altune of Conanga 6104  
 Sitz Henrietta Pride 81M # Sitz Value 7097  
 Sitz Henrietta Pride 1370

#+ BC Lookout 7024 OCC Legend 616L  
**Boyd Forever Lady 0210** Gibbet Hill Mignonne E37  
 16716012 Boyd Forever Lady 5110 #+ Wulff's Ext 6106  
 Boyd Forever Lady 7120

CED	BW	WW	YW	Milk
+6 0.25	+2.6 0.35	+65 0.31	+110 0.24	+30 0.21
MARB	I+.27	RE	I+.61	FAT
\$W	+60.86	\$F	+70.87	\$G
		\$B	+24.38	\$B
				+132.60

Consigned by: Shutte Land and Cattle

• Fancy three year old cow with her second calf due before sale day. B19 has strong EPDs from her performance sire, Sitz Upward 307R, yet she has an angular, feminine, attractive phenotype from her dam's sire, BC Lookout 7024. B19's first calf ratioed BW 102, WW 115.

The calf at side, sired by Platinum, will have excellent EPDs and should have strong eye appeal.



Deer Valley All In - Sire of Lot 39

# Fall Cow Calf Pairs and Fall Calving Cows

42

## OGA Blackcap A03

Calved: 3/30/2013 Cow: 17491658 Tattoo: A03

#+ HA Image Maker 0415  
**Benfield Substance 8506**  
 #16207085 Benfield Edella 1105

# Hero 6267 of RR 2418  
 HA Rito Blackcap 9038  
 Jauer Java 8136  
 Benfield Edella 7813  
 # Bon View New Design 878  
 Happy Grill of Conanga 6260  
 # Summitcrest High Prime 0H29  
 A Plus Blackcap 9075

# Connealy Reflection  
**Claylick Run Blackcap X045**  
 16972851 Circle A Blackcap 3523

CED	BW	WW	YW	Milk
+8 0.22	+0.8 0.28	+53 0.26	+89 0.21	+24 0.19
MARB	+0.41	RE	+0.33	FAT
\$W	+56.31	\$F	+41.05	\$G
		\$B	+26.58	
				\$B
				+102.83

Consigned by: Old Gate Angus

- OGA Blackcap A03 is sired by the ever popular Benfield Substance
- Sells with a heifer calf at side OGA Blackcap E18 (Reg. 18878762), Lot 42A, born 9/14/17 with a birth weight of 71 lbs. This heifer is sired by 44 Envision, the Ten X son that has it all - calving ease, growth, carcass and "cow sense" phenotype

44

## Legacy Eisa Erica 208 [DDF]

Calved: 2/2/2012 Cow: 17235601 Tattoo: 208

#+ SAV Mandan 5664  
**LPH Mandan 949**  
 16604374 Three Trees Everelda 2481

# SAV 8180 Traveler 004  
 SAV Abigale 0451  
 # Bon View New Design 1407  
 Three Trees Everelda 9467  
 # B/R New Design 036  
 #+ GAR Ext 4206  
 # Hyline Right Time 338  
 Circle S Eisa Erica 2113

# GAR Predestined  
**Stucky Eisa Erica 8522**  
 16524944 Circle S Eisa Erica 4079

CED	BW	WW	YW	Milk
+9 0.19	-0.8 0.34	+46 0.29	+79 0.26	+27 0.21
MARB	+0.75	RE	+0.22	FAT
\$W	+52.58	\$F	+28.35	\$G
			+39.52	\$B
				+96.60

Consigned by: Legacy at Pine Hill Farm

- Sell bred 12-1-2016 to GH Semper Fi 321 sells safe due 9-11-2017 She has a weaning ratio of 98 on two calves. Maternally she stems from the Circle S Eisa Erica family known for a combination of fleshing ability, udder quality, and structural soundness. This cow family laid the foundation to the Gordan Stucky herd in Kansas and an important matron in the Thomas Ranch herd.

46

## Silverado Victoria 1125

Calved: 4/10/2011 Cow: 17034184 Tattoo: 1125

# SydGen CC&7  
**Hoover Dam**  
 #16124994 # Erica of Ellston C124

#+ SAF Connection  
 SydGen Forever Lady 4087  
 # TC Gridiron 258  
 Erica of Ellston V65  
 # Connealy Dateline  
 # Vermilion Blackbird 5044  
 # N Bar Emulation EXT  
 GAR 6807 Traveler 1432

# Vermilion Dateline 7078  
**Miss EXT 2217 of Foxcross**  
 14356697 VT Ext S17

CED	BW	WW	YW	Milk
+3 0.23	+2.2 0.29	+46 0.26	+86 0.23	+25 0.28
MARB	+0.68	RE	+0.48	FAT
\$W	+42.77	\$F	+48.83	\$G
			+41.61	\$B
				+121.83

Consigned by: Silverado Cattle Company

- Here is an opportunity to grab a super efficient, beautiful made, stout and maternally impressive Hoover Dam-VRD daughter in production. The only reason we are selling her is a reduction of the number of cows we have and the good ones go first.

- Victoria has produced several all around good calves. All have been income producing genetic packages whether they were heifers or bulls. Her last SAV Teen Speed calf weaned at 802 lbs. Her new SAV Resource 1441 bull calf at side (46A) should prove to be a real asset for the buyer of the cow.

43

## Wood Georgia 2110

Calved: 2/12/2012 Cow: 17439936 Tattoo: 2110

# TC Gridiron 258  
**SAV Iron Mountain 8066**  
 #16115617 SAV Madame Pride 3249

#+ GAR Grid Maker  
 # TC Blackbird 7049  
 # SAV 8180 Traveler 004  
 SAV Madame Pride 8264  
 # SAV 8180 Traveler 004  
 SAV May 2410  
 Champion Hill Tecumseh  
 LLA Georgia 419

# SAV Net Worth 4200  
**Champion Hill Georgia 6952**  
 16230747 CHAMPION HILL Georgia 2175

CED	BW	WW	YW	Milk
+5 0.22	+3.2 0.24	+52 0.24	+94 0.22	+13 0.26
MARB	+0.51	RE	+0.36	FAT
\$W	+33.00	\$F	+54.52	\$G
			+31.65	\$B
				+109.25

Consigned by: Legacy at Pine Hill Farm

- Bred natural to LPH Angus Valley 545 Due October 12, 2017. Since I have owned her she has had two calves one weighing 56 pounds and another 70 lb. , so her high birth weight EPD has not resulted in large calves at birth. She will have a calf by sale day so you will be able to evaluate her actual production. I have a heifer I will be keeping to replace her. This one should be a good buy!

45

## SSA Patriot's Matron Z01

Calved: 2/1/2012 Cow: 17152725 Tattoo: Z01

# Basin Up The Limit  
**SQ Patriot 103R**  
 15676975 Rita 3540 of 021 Rito 111

# CA Future Direction 5321  
 Basin Chloe 813K  
 #+ Rito 111 of 2536 Rito 6I6  
 Rita 021 of 7R11 RDA  
 # SS Traveler 6807 T510  
 SS Miss Rita R011 7R8  
 # Bon View New Design 1407  
 GAR 6148 Emulation 108

# SS Objective T510 0T26  
**LLF 501 Objective 870**  
 16004383 LLF 108 Design 1407 501

CED	BW	WW	YW	Milk
+9 0.23	+1.4 0.33	+47 0.30	+82 0.26	+21 0.17
MARB	+0.69	RE	+0.61	FAT
\$W	+42.35	\$F	+40.04	\$G
			+48.66	\$B
				+105.15

Consigned by: Miky-Leto Farm

- This proven female sired by SQ Patriot 103R, is out of an Objective 0T26 daughter from the Locust Level Program. Her 2015 daughter sells as Lot 22 in this sale.
- She sells pasture exposed to ML - Mick (18297010). Breeding information will be available sale day.



Silverado Victoria 1125 - Lot 46

# Fall Cow Calf Pairs and Fall Calving Cows

47

## Legacy Forever Lady 084

Calved: 12/18/2010 Cow: 16921900 Tattoo: 84

#+ GAR Grid Maker # GDAR Traveler 044

SAV Bismarck 5682 GAR Precision 2536

#+15109865 SAV Abigale 0451 # Schoenes Fix It 826

SAV Abigale 6062

#+ HSAF Bando 1961 #+ SAF 598 Bando 5175

Legacy Forever Lady 800 JKS Miss Cheyenne 196

16052543 KPCC Precision Lady 3005 # GAR Precision 1680

Brandy Rock Forever L50F8013

CED	BW	WW	YW	Milk
+3 0.25	+3.8 0.37	+49 0.32	+91 0.29	+23 0.29
MARB	RE	FAT	FAT	FAT
+0.29	+0.41	+0.009		
\$W	\$F	\$G	\$B	\$B
+46.73	+47.48	+25.30		+94.28

Consigned by: Legacy at Pine Hill Farm

• Bred to Bruin Upoar 1-2-2017 examined safe due 10/11/2017. 084 is a Bismarck daughter that stems from the famous foundation Pathfinder Dam Forever Lady 163 GDAR who ranks among the most influential cows in breed history. 084 has weaned four calves with 100 ratio. Great addition to any herd.



Locust Hill Jackson M116K - Sire of Lot 48A

48

## Basin Lucy 0073 [DDP]

Calved: 1/21/2010 Cow: 16606404 Tattoo: 0073

#+ O C C Emblazon 854E # D H D Traveler 6807

Rito 6EM3 of 4L1 Emblazon Dixie Erica of C H 1019

#+15266350 Rita 4L1 of 2536 208 # Bon View New Design 208

GAR Precision 2536

# FV 20K King 308M Rafter S Ronan Tex 20K

Basin Lucy 344U Queen 362E

16010340 Basin Lucy 8N02 # Bon View New Design 1407

Basin Lucy 178E

CED	BW	WW	YW	Milk
+5 0.29	+2.7 0.38	+58 0.33	+98 0.25	+24 0.24
MARB	RE	FAT	FAT	FAT
I+.43	I+.33	I+.038		
\$W	\$F	\$G	\$B	\$B
+49.20	+53.81	+28.00		+87.48

Consigned by: Locust Hill Farm

• This female was selected from the Basin Dispersal sale and has been a consistent producer for Locust Hill Farm, raising several excellent calves. Her laid back disposition has made her a favorite around the farm.

• Due to bull injury, she was bred for a June calf, and was held open to rebreed for fall calving. Sells open and ready to breed to the bull of your choice.

48A

## Locust Hill Lucy E81

Calved: 6/28/2017 Cow: Pending Tattoo: E81

Locust Hill Jackson M116K Dameron First Class EXG RS First Rate S903 R3

17484142 Whitestone Erica Z011 # Dameron Northern Miss 3114

#+ SAV Pioneer 7301

Whitestone Erica 6606

Basin Lucy 0073 OCC Emblazon 854E

16606404 Basin Lucy 344U # Rita 4L1 of 2536 208

# FV 20K King 308M

Basin Lucy 8N02

	CED	BW	WW	YW	Milk
Sire	+3	+4.0	+57	+83	+12
Dam	+5	+2.7	+58	+98	+24
MARB	RE	FAT	\$W	\$B	
Sire	-0.02	+0.32	+0.017	+33.41	+80.60
Dam	I+0.43	I+0.33	I+0.038	+49.20	+87.48

Consigned by: Locust Hill Farm

• This heifer is out of our senior herd sire, Locust Hill Jackson M116K, a First Class son who has produced some excellent bulls and females for us.

# Spring Cow Calf Pairs

49

## Ankony Rita 5156 [OHP]

Calved: 4/15/2015 Cow: 18135131 Tattoo: 5156

Windchime Hoover Dam 1480 # Hoover Dam

Ankonian Figgio 9293 Windchime Black Angel 9240

17612544 MGR Blackbird 0123 EXAR Right Time 5021

Riverbend Blackbird S128

#+ GAR New Design 5050 # B/R New Design 036

Rita 2546 of 009 5050 GAR Precision 706

17189343 Rita 009 of Rita 5M13 OBJ # SS Objective T510 OT26

Rita 5M13 of 2V9 Predestined

CED	BW	WW	YW	Milk
I+8 0.05	I+1.0 0.05	I+58 0.05	I+105 0.05	I+23 0.05
MARB	RE	FAT	FAT	FAT
N/A	N/A	N/A	N/A	N/A
\$W	\$F	\$G	\$B	\$B
+49.95	+66.63	N/A		N/A

Consigned by: The Farm at South River

• This first calf heifer that traces back to Hoover Dam on the sire side is out of a GAR New Design 5050 daughter from the Rita cow family.

• She sells pasture exposed to Fasr All In 5001 (18348835) from 6/30/17 to 8/26/17.

49A

## Fasr Rita Heifer Calf

Calved: 3/29/2017 Cow: Pending Tattoo:

GAR Prophet # CRA Bextor 872 5205 608 # BAR Ext Traveler 205

16295688 GAR Objective 1885 # Cra Lady Jayne 608 498 S Easy

SS Objective T510 OT26

GAR 1407 New Design 2232

Windchime Hoover Dam 1480

Ankony Rita 5156 MGR Blackbird 0123

18135131 Rita 2546 of 009 5050 #+ GAR New Design 5050

Rita 009 of Rita 5M13 OBJ

	CED	BW	WW	YW	Milk
Sire	+11	+1.3	+72	+124	+33
Dam	I+8	I+1.0	I+58	I+105	I+23
MARB	RE	FAT	\$W	\$B	
Sire	+1.58	+0.042	+0.047	+92.51	+128.54
Dam	N/A	N/A	N/A	+49.95	N/A

Consigned by: The Farm at South River

• This daughter of Lot 49 is sired by GAR Prophet and should offer a balanced set of EPDs.

# Spring Cow Calf Pairs

50

## FASR Tequila 4012 [DDP-OHP]

Calved: 4/28/2014 Cow: 18095163 Tattoo: 4012  
 Connealy Final Solution # Connealy Answer 71

**JDH Final Solution 3312**  
 17588203 JDH BT Heiress 0457

JDH Keystone Ext # N Bar Emulation EXT  
**JDH Keyette Tequila 3812**  
 17333142 CRW Miss Tequila 7020 of JDH  
 Este of Conanga 364  
 BT Powerline 392K  
 JDH Heiress 0285  
 Mengs Miss Skymere 27S  
 Cherry Knoll Pole Setter  
 CRW Tequila EXT

CED	BW	WW	YW	Milk
+4 0.09	+1.7 0.15	+37 0.13	+62 0.09	+20 0.12
MARB	N/A	RE	N/A	FAT
\$W +30.44	\$F +5.36	\$G N/A	\$B N/A	

Consigned by: The Farm at South River

- Another daughter of JDH Final Solution 3312 from the Farm at South River, this young cow is stems from the JDH Cattle Company program and is an attractive made female.
- Sells AI bred to Connealy Comrade 1385 on 6/26/17 and pasture exposed to FASR All In 5001 (18348835) from 6/30/17 to 8/26/17.

50A

## FASR Tequila Heifer Calf

Calved: 4/11/2017 Cow: Pending Tattoo:  
 # Mytty In Focus # SAF Focus of ER

**WHS Limelight 64V**  
 #16073564 # WHS Predestined Lass 77T # GAR Predestined  
 # WHS 8180 Lass 14K  
 #+ JDH Final Solution 3312  
**FASR Tequila 4012**  
 18095163 JDH Keyette Tequila 3812  
 Connealy Final Solution  
 JDH BT Heiress 0457  
 JDH Keystone Ext  
 CRW Miss Tequila 7020 of JDH

CED	BW	WW	YW	Milk
Sire +10	+1.5	+67	+122	+24
Dam +4	+1.7	+37	+62	+20
MARB	RE	FAT	\$W	\$B
Sire +0.93	+0.88	-0.021	+63.31	+174.30
Dam N/A	N/A	N/A	+30.44	N/A

Consigned by: The Farm at South River

- This WHS Limelight 64V daughter combines high growth and strong maternal genetics.

51

## Legacy Everelda 182 [DDF]

Calved: 12/15/2011 Cow: 17235595 Tattoo: 182  
 # Connealy Onward # Connealy Lead On

**Werner War Party 2417**  
 #+16004857 BAAR USA Lady Jaye 489 # BAR Ext Traveler 205  
 Cra Lady Jaye 608 498 S Easy

# SAV 8180 Traveler 004 # Sitz Traveler 8180  
**Legacy Everelda 748**  
 16052533 Three Trees Everelda 2481 # Boyd Forever Lady 8003  
 Three Trees Everelda 9467  
 Bon View New Design 1407

CED	BW	WW	YW	Milk
+3 0.26	+1.5 0.39	+44 0.34	+78 0.30	+39 0.29
MARB	+0.22	RE	+0.68	FAT
\$W +60.69	\$F +18.09	\$G +25.35	\$B +85.37	

Consigned by: Legacy at Pine Hill Farm

- Sells with a heifer calf born 3/1/2017 sired by GH Semper Fi 321
- Bred 5-29-2017 to Semper Fi. 182 has a weaning ratio of 105 on three calves. She is descendant of our foundation cow Three Trees Everelda 2481.

51A

## LPH Everelda 713

Calved: 3/1/2017 Cow: 18862705 Tattoo: 713

# V D A R Really Windy 4097 # A A R Really Windy 1205  
**Ginger Hill Semper Fi 321**  
 17694839 Ginger Hill Helen 172  
 VDAR Blackbird 2031  
 Ginger Hill Duke 801

#+ Werner War Party 2417 # Connealy Onward  
**Legacy Everelda 182**  
 17235595 Legacy Everelda 748 # BAAR USA Lady Jaye 489  
 S A V 8180 Traveler 004  
 Three Trees Everelda 2481

CED	BW	WW	YW	Milk
+4 0.16	+1.6 0.27	+47 0.17	+79 0.15	+32 0.12
MARB	I+.17	RE	I+.66	FAT
\$W +54.21	\$F +23.97	\$G +24.68	\$B +80.09	

Consigned by: Legacy at Pine Hill Farm

- Sired by a Ginger Hill bred VDAR Really Windy 4097, this female should have plenty of maternal strength.

## Embryos

52

## Silverado Blackbird 6062 Embryos

### 3 Grade 1 Embryos

Silveiras Conversion 8064 #+ BT Crossover 758N

**SAC Conversation**  
 17808532 # Lafins Farrah 0252 #+ EXG Saras Dream S609 R3  
 #+ SAV 004 Predominant 4438  
 Lafins Farrah 7215

# SAV 8180 Traveler 004 # Sitz Traveler 8180  
**Silverado Blackbird 6062**  
 15706442 Beaver Dam Blackbird 441 # Boyd Forever Lady 8003  
 Whitestone Widespread MB  
 Leachman Blackbird 2088

CED	BW	WW	YW	Milk
Sire +6	+1.2	+43	+80	+27
Dam -3	+2.8	+40	+67	+30
MARB	RE	FAT	\$W	\$B
Sire +0.56	+0.84	+0.034	+46.52	+109.20
Dam +0.09	-0.08	+0.037	+40.94	+66.11

Consigned by: Silverado Cattle Company

- In the Fall 2017 Select Sires lineup SAC Conversation has been described as "a proven sire of showing winners". American Angus Association ROV standings has Conversation as the leading Get of Sire of the Year and leading Junior Get of Sire of the Year.
- Silverado Blackbird 6062, herself a superior Junior Angus showing project for our daughter, Colleen, has produced consistently phenotypically impressive offspring. 2016 VA Breeders Open Show her Dameron First Impression bull was pinned Reserve Grand Champion.
- Selling 3 Grade 1 embryos. Silverado guarantees 1 pregnancy if implanted by a licensed embryologist.



SAC Conversation - Sire of Lot 52 Embryos

# American Angus Association® Selection Tools

**Expected Progeny Difference (EPD)**, is the prediction of how future progeny of each animal are expected to perform relative to the progeny of other animals listed in the database. EPDs are expressed in units of measure for the trait, plus or minus. Interim EPDs may appear on young animals when their performance has yet to be incorporated into the American Angus Association National Cattle Evaluation (NCE) procedures. This EPD will be preceded by an "I", and may or may not include the animal's own performance record for a particular trait, depending on its availability, appropriate contemporary grouping, or data edits needed for NCE.

**Accuracy (ACC)**, is the reliability that can be placed on the EPD. An accuracy of close to 1.0 indicates higher reliability. Accuracy is impacted by the number of progeny and ancestral records included in the analysis.

## GROWTH

**Calving Ease Direct (CED)**, is expressed as a difference in percentage of unassisted births, with a higher value indicating greater calving ease in first-calf heifers. It predicts the average difference in ease with which a sire's calves will be born when he is bred to first-calf heifers.

**Birth Weight EPD (BW)**, expressed in pounds, is a predictor of a sire's ability to transmit birth weight to his progeny compared to that of other sires.

**Weaning Weight EPD (WW)**, expressed in pounds, is a predictor of a sire's ability to transmit weaning growth to his progeny compared to that of other sires.

**Residual Average Daily Gain (RADG)**, feed efficiency expressed in pounds per day, is a predictor of a sire's genetic ability for postweaning gain in future progeny compared to that of other sires, given a constant amount of feed consumed.

**Yearling Weight EPD (YW)**, expressed in pounds, is a predictor of a sire's ability to transmit yearling growth to his progeny compared to that of other sires.

**Yearling Height EPD (YH)**, is a predictor of a sire's ability to transmit yearling height, expressed in inches, compared to the that of other sires.

**Scrotal Circumference EPD (SC)**, expressed in centimeters, is a predictor of the difference in transmitting ability for scrotal size compared to that of other sires.

**Docity (DOC)**, is expressed as a difference in yearling cattle temperament, with a higher value indicating more favorable docility. It predicts the average difference of progeny from a sire in comparison with another sire's calves.

## MATERNAL

**Heifer Pregnancy (HP)**, is a selection tool to increase the probability or chance of a sire's daughters becoming pregnant as first-calf heifers during a normal breeding season. A higher EPD is the more favorable direction, and the EPD is reported in percentage units.

**Calving Ease Maternal (CEM)**, is expressed as a difference in percentage of unassisted births with a higher value indicating greater calving ease in first-calf daughters. It predicts the average ease with which a sire's daughters will calve as first-calf heifers when compared to daughters of other sires.

**Maternal Milk EPD (Milk)**, is a predictor of a sire's genetic merit for milk and mothering ability as expressed in his daughters compared to daughters of other sires. In other words, it is that part of a calf's weaning weight attributed to milk and mothering ability.

**Mature Weight EPD (MW)**, expressed in pounds, is a predictor of the difference in mature weight of daughters of a sire compared to the daughters of other sires.

**Mature Height EPD (MH)**, expressed in inches, is a predictor of the difference in mature height of a sire's daughters compared to daughters of other sires.

**Cow Energy Value (\$EN)**, expressed in dollars savings per cow per year, assesses differences in cow energy requirements as an expected dollar savings difference in daughters of sires. A larger value is more favorable when comparing two animals (more dollars saved on feed energy expenses). Components for computing the cow \$EN savings difference include lactation energy requirements and energy costs associated with differences in mature cow size.

## CARCASS

The genetic evaluation produces a single set of EPDs for carcass weight, marbling score, Ribeye area and fat thickness. The units of measure are in carcass trait format and analyzed on an age-constant basis.

**Carcass Weight EPD (CW)**, expressed in pounds is a predictor of the differences in hot carcass weight of a sire's progeny compared to progeny of other sires.

**Marbling EPD (Marb)**, expressed as a fraction of the difference in USDA marbling score of a sire's progeny compared to progeny of other sires.

**Ribeye Area EPD (RE)**, expressed in square inches, is a predictor of the difference in ribeye area of a sire's progeny compared to progeny of other sires.

**Fat Thickness EPD (Fat)**, expressed in inches, is a predictor of the differences in external fat thickness at the 12th rib (as measured between the 12th and 13th ribs) of a sire's progeny compared to progeny of other sires.

## \$VALUE INDEXES

**\$Value indexes**, are multi-trait selection indexes to assist beef producers by adding simplicity to genetic selection decisions. \$Values are reported in dollars per head, where a higher value is more favorable. The \$Value is an estimate of how future progeny of each sire are expected to perform, on average, compared to progeny of other sires in the database if the sires were randomly mated to cows and if calves were exposed to the same environment.

**Weaned Calf Value (\$W)**, an index value expressed in dollars per head, is the expected average difference in future progeny performance for pre-weaning merit. \$W includes both revenue and cost adjustments associated with differences in birth weight, weaning direct growth, maternal milk, and mature cow size.

**Feedlot Value (\$F)**, an index value expressed in dollars per head, is the expected average difference in future progeny performance for postweaning merit compared to progeny of other sires.

**Grid Value (\$G)**, an index value expressed in dollars per head, is the expected average difference in future progeny performance for carcass grid merit compared to progeny of other sires.

**Quality Grade (\$QG)** represents the quality grade segment of the economic advantage found in \$G. \$QG is intended for the specialized user wanting to place more emphasis on improving quality grade. The carcass marbling (Marb) EPD, which is influenced by carcass marbling scores and ultrasound percent intramuscular fat (% IMF) measurements, contribute to \$QG.

**Yield Grade (\$YG)** \$YG represents the yield grade segment of the economic advantage found in \$G. \$YG is intended for the specialized user wanting to place more emphasis on red meat yield. It provides a multi-trait approach to encompass ribeye, fat thickness and weight into an economic value for red meat yield.

**\$G** combines both \$QG and \$YG, and may be the best carcass decision tool for focusing on quality and red meat yield simultaneously.

**Beef Value (\$B)**, an index value expressed in dollars per head, is the expected average difference in future progeny performance for postweaning and carcass value compared to progeny of other sires.



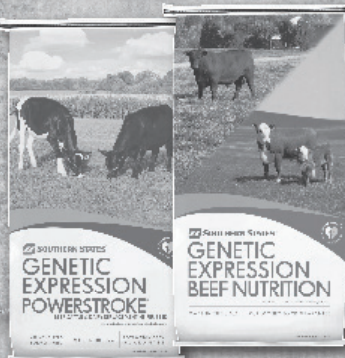
# OPTIMIZE YOUR HERD'S GENETIC POTENTIAL

INTRODUCING SOUTHERN STATES® GENETIC EXPRESSION BEEF NUTRITION PROGRAM

## BUILD YOUR HERD POWER

- > Nutrition-based on life stage and management needs
- > Can be hand-fed or self-fed to meet your management needs
- > Incorporates organic selenium, Zinpro Availa 4®, Intellibond® and yeast compounds to support gut health, immunity, sperm quality and strong hooves

FOR MORE INFORMATION, VISIT [SOUTHERNSTATES.COM/GENETICEXPRESSION](http://SOUTHERNSTATES.COM/GENETICEXPRESSION)



**Front Royal Co-op**  
50 Water Street  
Front Royal, VA 22630  
540-635-3118

**Stephen's City Co-op**  
5784 Valley Pike  
Stephens City, VA 22655  
540-869-3132

**Winchester Co-op**  
447 Amherst Street  
Winchester, VA 22601  
540-662-0375

**Area Feed Rep:**  
Tyler Cockerham  
540-336-1980  
tyler.cockerham@sscoop.com



If you have questions or comments, please contact Feed Division Customer Service at [safequestions@sscoop.com](mailto:safequestions@sscoop.com).

You have a large stake in what you do.



The last thing you want is a lender who keeps grilling you for information about your industry and your operation. You need a lender who won't grind your business to a halt trying to make heads or tails out of what you do. Farm Credit has been financing rural America for 100 years. Call us—we're the experts.

Loans for:

Livestock | Land | Farms | Equipment | Homes | Agribusinesses and More

540.347.3344  
[FarmCreditofVirginias.com](http://FarmCreditofVirginias.com)  
NMLS# 456965



## CLEARBROOK FEED & SUPPLY

115 Hopewell Lane  
Clearbrook, Va, 22603  
(540) 662-2749



One Stop Shop for all Farm and Home Needs

PROVIDING OUR AGRICULTURAL COMMUNITY WITH QUALITY FARM, HOME & GARDEN PRODUCTS AND EXCEPTIONAL, PERSONAL CUSTOMER SERVICE

PURINA **Crystalix**



**Sullivan Supply**

TARTER



*Please bring this catalog to the sale with you!!*

**B**ROWNING  
**E**QUIPMENT  
INC.

**JOHN WILKINS**

800 E. Main Street • Purcellville, VA 20132  
(540) 338-7123 ext. 105  
(540) 338-5835  
jwilkins@browningequipment.com

**Kubota**

*Cub Cadet*

**eXmark**

*Sale Lot tags provided by:*

**Allflex**<sup>®</sup>

Identify the Difference

*Dave McElhaney*  
*Northeast Regional Manager*  
*dmcelhaney@allflexusa.com*  
*724-494-6199*  
*www.allflexusa.com*

**WINCHESTER EQUIPMENT COMPANY**

Agricultural, Construction, Material Handling Equipment

Since 1957

**CHUCK ALEXANDER**  
**Sales Representative**

Winchester Equipment Co.  
121 Indian Hollow Road • Winchester, VA 22603  
Business: (540) 667-2244  
(800) 323-3581  
FAX: (540) 886-3068

[calexander@winchesterequipment.com](mailto:calexander@winchesterequipment.com)  
[www.winchesterequipment.com](http://www.winchesterequipment.com)  
Cell: (540) 533-5669

**NEW HOLLAND**  
CONSTRUCTION

**Kubota**

**Bobcat**



**Locke Wysong**  
Multi-Line Agent

cell 304.671.2341  
fax 304.728.6645  
[locke.wysong@farm-family.com](mailto:locke.wysong@farm-family.com)

118 North Charles Street  
Charles Town, WV 25414

  
**AMERICAN  
NATIONAL**  
FAMILY OF COMPANIES

  
**Farm  
Family**

FARM|COUNTRY ESTATE|BUSINESS OWNERS  
CONTRACTOR|LANDSCAPERS  
COMMERCIAL LIABILITY|HOME|AUTO  
COMMERCIAL AUTO|LIFE  
DISABILITY INCOME|ANNUITIES



### Clarke County, VA

#### HISTORIC RUNNYMEADE

Exceptional 285 acre Clarke County farm with 57 acres in WV. Breathtaking mountain views. 2400' on strong creek with an additional spring branch for your private trout fishery. State-designated as "important farmland" with soil suitable for cultivation and/or pasture. Brick Federal style home circa 1850 with additional guest house and ranch style manager's house. 8 DURs. Extremely private. \$2,900,000



### Jefferson County, WV

#### 160 ACRES OF PRIME FARMING LAND WITH SPECTACULAR VIEWS

Located a few miles from the Clarke County line. No better land around—gently sloping, 100% tillable with deep soils, no rock. Southeast exposure. Myerstown area. \$1,285,000



### Jefferson County, WV

#### 171 ACRES OF CREEK FRONTAGE FARM LAND

Outstanding farm land with frontage on a strong creek. Virtually entirely tillable, minimal rock, gently rolling, outstanding views. Myerstown area. \$1,300,000



## FARMS FOR SALE

(540) 837-1429

[www.clarkecountyproperties.com](http://www.clarkecountyproperties.com)



*For your farm sale or purchase, rely on the Broker with a lifetime of farm management experience*



## Consignor Information

Audley Farm  
Matthew Deacon  
Berryville, VA  
540-955-1251  
Lots 6, 7, 11, 14, 15, 16, 32

Beaver Dam Farm  
Gordon Keys  
Middleburg, VA  
540-592-3310  
Lots 4, 5

Broad Run Meadows, LLC  
Chad Williams  
Manassas, VA  
571-447-7562  
Lots 8, 10, 12

Farm at South River  
Dave Zitz, Manager  
Stanardsville, VA  
540-522-1700  
Lots 18, 19, 49&A, 50&A

Scott Herndon  
Berryville, VA  
540-550-1834  
Lot 2

Lazy Lane Farm, LLC  
Jim Wylie, Manager  
Upperville, VA  
540-379-3604  
Lot 31

Legacy at Pine Hill Farm  
Steve Jones  
Forest, VA  
434-525-5150  
Lots 22, 23 24, 25, 26, 27, 28,  
29, 30, 35, 36, 37, 38, 43, 44, 47,  
51&A

Locust Hill Farm  
Michael Webert, Manager  
Middleburg, VA  
703-906-4667  
Lots 3, 20, 48&A

Miky-Leto Farm  
Howard Mikytuck  
Louisa, VA  
804-441-3758  
Lots 21, 45

Miller Angus  
Craig and Nancy Miller  
Harrisonburg, VA  
540-820-9818  
Lot 13

Monomoy Farm  
John Pennington  
Warrenton, VA  
540-222-5500  
Lots 39, 40

Old Gate Angus  
Mike Owens  
Linden, VA  
540-363-3820  
Lots 9, 17, 33, 42

Schutte Land and Livestock  
Jack Schutte  
Boyce, VA  
540-247-8583  
Lot 41


Silverado Cattle Company  
Glenn and Ranchel Covington  
Orlean, VA  
540-347-6028  
Lots 46, 52

Turning Point Angus  
Chuck Alexandar  
Berryville, VA  
540-955-1517  
Lot 34

Woodside Farms  
Trey Gum  
Berryville, VA  
540-974-8659  
Lot 1



Northern Virginia Angus Association  
1551 Lewisville Rd  
Berryville, VA 22611



NVAA  
Fall Female  
Classic

**Northern Virginia Angus Association's  
FALL FEMALE  
CLASSIC SALE**

**Saturday, October 28, 2017 • 12 NOON**

HOSTED BY:  
**Woodside Farm South**  
New Market, VA